


AREA SCHEDULE

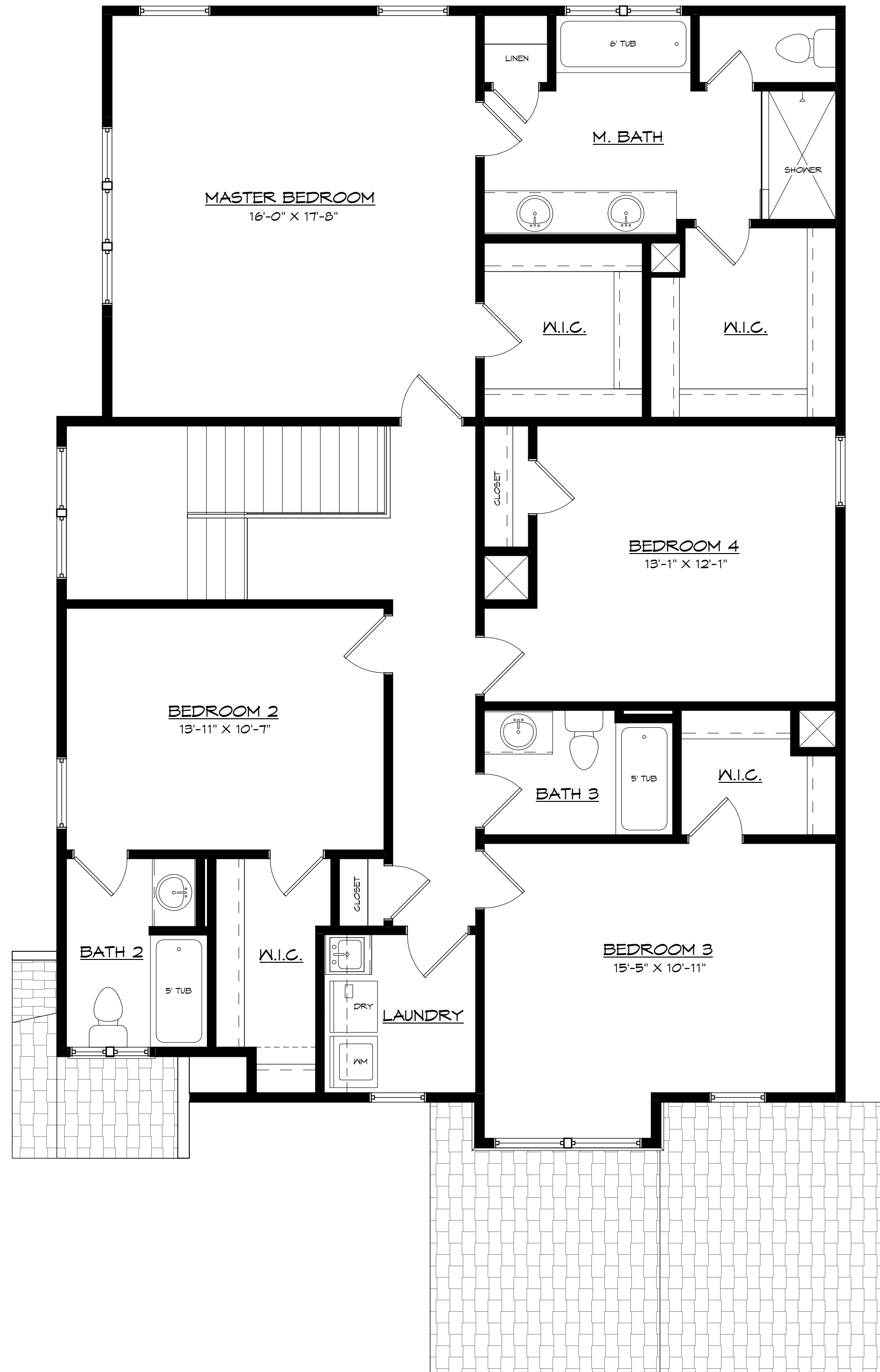
FIRST FLOOR HEATED	1178 SF
SECOND FLOOR HEATED	1620 SF
TOTAL HEATED	2798 SF
GARAGE	474 SF
PORCH	135 SF
TOTAL UNHEATED	609 SF
TOTAL AREA	3407 SF

1 FIRST FLOOR PLAN
1/4" = 1'-0"

JCB Urban Company "JCB Urban" is a service mark of JCB Urban Company. Prices, plans, designs, architectural renderings, uses, dimensions, specifications, materials, availability, improvements and amenities depicted or described herein are subject to change or cancellation (in whole or in part) without notice. Illustrations may include artists' depictions and differ from final improvements. Equal housing opportunity. Legal Notice


<p>JCB Urban</p> <p>Millbrook Cottage - A</p>	Plan Date: 12/2017
	Revision Date:
 <p>Tino Home Design, LLC Residential Design and Drafting Services</p> <p>Post Office Box 1978 Huntersville, North Carolina 28070 Phone: (704) 992-9691 Fax: (704) 992-9692 www.tinohomedesign.com</p>	Drawn By: MT
	Sheet Number: 1

Walker Road



1 **SECOND FLOOR PLAN**
1/4" = 1'-0"

JCB Urban Company "JCB Urban" is a service mark of JCB Urban Company. Prices, plans, designs, architectural renderings, uses, dimensions, specifications, materials, availability, improvements and amenities depicted or described herein are subject to change or cancellation (in whole or in part) without notice. Illustrations may include artists' depictions and differ from final improvements. Equal housing opportunity. Legal Notice

JCB Urban Millbrook Cottage - A	Plan Date: 12/2017
	Revision Date:
 Tino Home Design, LLC Residential Design and Drafting Services <small>Post Office Box 1978 Huntersville, North Carolina 28070 Phone: (704) 992-9691 Fax: (704) 992-9692 www.tinohomedesign.com</small>	Drawn By: MT
	Sheet Number 2

Walker Road